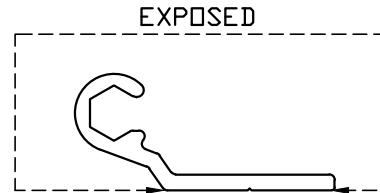
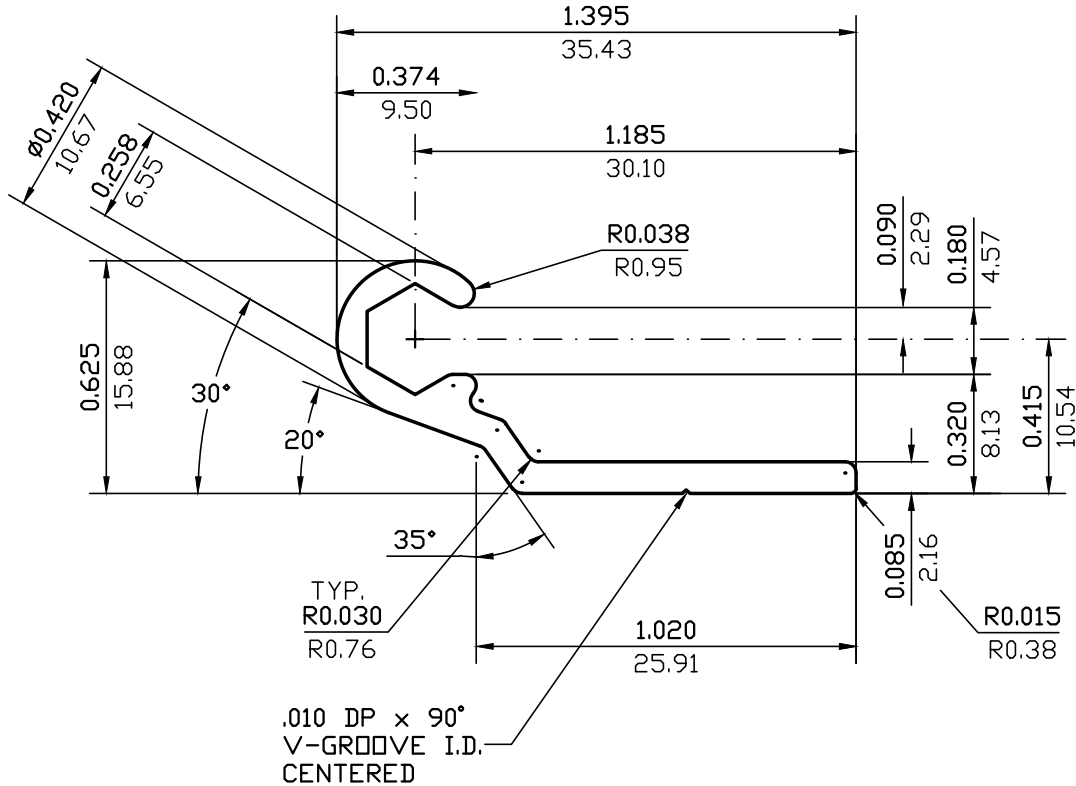


NOTE: BREAK ALL CORNERS WITH 0.015" (.38 MM) RADIUS UNLESS OTHERWISE NOTED. STANDARD TOLERANCES TO APPLY UNLESS OTHERWISE SPECIFIED.

CUSTOMER CAN ART OPEN		DIE No. ES05948	REV. No. 0
DESCRIPTION HINGE	CUSTOMER PART No.	QUOTE No. 08-0094-1	PROPOSAL No. S-18777



ACTUAL SIZE

WALL THICKNESS **0.085(2.16)** EXCEPT AS SHOWN

DATE	REV	DESCRIPTION	BY
EST.AREA	0.168	IN. ²	EST.AREA 108.289 MM. ²
EST.WT.	0.198	LBS/FT.	EST.WT. 0.295 KG/M.
EST.PER.	4.178	IN.	EST.PER. 106.117 MM.
OUT PER.		IN.	OUT PER. MM.
C.C.D.	1.461	IN.	C.C.D. 37.110 MM.
FINISH	M/F		ALLOY 6063
CKD BY	FACTOR 21	SCALE 2:1	DWN BY C.P. DATE 10/23/2009

CAN ART

ALUMINUM EXTRUSION INC.

85 PARKSHORE DRIVE
BRAMPTON, ONT L6T 5M1
TEL. NO. (905) 791-1464
FAX NO. (905) 791-9151
WEB: www.canart.com

THIS DRAWING IS NOT NECESSARILY A COPY OF YOUR ORIGINAL. PLEASE APPROVE DIMENSIONS AND TOLERANCES INDICATED. CAN ART ASSUMES NO RESPONSIBILITY EITHER TECHNICAL OR LEGAL FOR HAVING THIS SHAPE MADE. THE CUSTOMER AGREES TO FULLY PROTECT CAN ART ALUMINUM FROM CLAIMS OF OTHERS RESULTING FROM THIS SHAPE.

SIGNED: _____ DATE: _____