

CUSTOMER

# CAN ART OPEN

DIE No.

ES13851

REV. No.

0

DESCRIPTION

2-1/2" PRESSURE PLATE

CUSTOMER PART No.

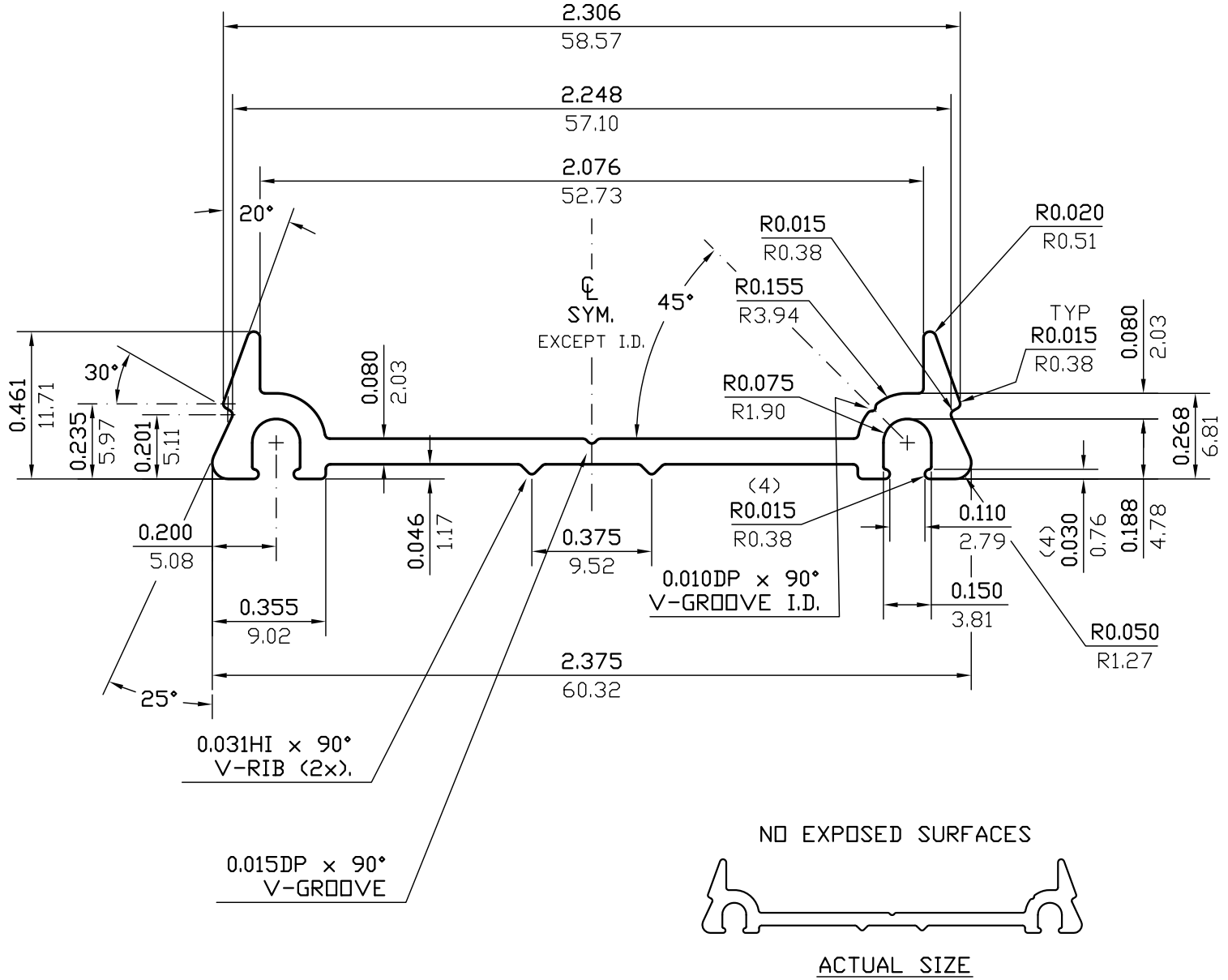
QUOTE No.

05-0295

PROPOSAL No.

S-15707

NOTE: BREAK ALL CORNERS WITH 0.015" (.38 MM) RADIUS UNLESS OTHERWISE NOTED. STANDARD TOLERANCES TO APPLY UNLESS OTHERWISE SPECIFIED.



WALL THICKNESS (AS SHOWN) EXCEPT AS SHOWN

DATE	REV	DESCRIPTION	BY
EST.AREA	0.276	IN. <sup>2</sup>	EST.AREA 178.186
EST.WT.	0.326	LBS/FT.	EST.WT. 0.485
EST.PER.	6.818	IN.	EST.PER. 173.176
OUT PER.		IN.	OUT PER.
C.C.D.	2.375	IN.	C.C.D. 60.325
FINISH	M/F		ALLOY 6063
CKD BY	FACTOR 21	SCALE 2:1	DWN BY P.M. DATE 06/08/2005

## CAN ART

ALUMINUM EXTRUSION INC.

85 PARKSHORE DRIVE  
BRAMPTON, ONT L6T 5M1  
TEL. NO. (905) 791-1464  
FAX NO. (905) 791-9151  
WEB: www.canart.com

THIS DRAWING IS NOT NECESSARILY A COPY OF YOUR ORIGINAL. PLEASE APPROVE DIMENSIONS AND TOLERANCES INDICATED. CAN ART ASSUMES NO RESPONSIBILITY EITHER TECHNICAL OR LEGAL FOR HAVING THIS SHAPE MADE. THE CUSTOMER AGREES TO FULLY PROTECT CAN ART ALUMINUM FROM CLAIMS OF OTHERS RESULTING FROM THIS SHAPE.

SIGNED: \_\_\_\_\_ DATE: \_\_\_\_\_